



CATALOGUE

LED LIGHTING FIXTURE

www.everlightlighting.com

EVERLIGHT

EVERLIGHT

EVERLIGHT illuminates the way for many of the world's brightest companies. Acclaimed as a premiere global solution provider in the opto-semiconductor industry and held in high regard as a reliable partner for many of the world's leading electronics companies, EVERLIGHT incorporates versatility and creativity to provide customer driven value.

Since its foundation in 1983, EVERLIGHT has been an innovator in the production of LED for home appliances. Today EVERLIGHT brings decades of knowledge to a wide range of applications in the LED market including automotive, backlighting, signage, infrared products, mobile devices and solid state lighting.

EVERLIGHT delivers products with high performance and aesthetics for LED projects of any scale. On top of that, EVERLIGHT lighting solutions in the best quality are offered at very competitive costs. EVERLIGHT improves the way we live. In addition, with applications for highly efficient indoor and outdoor lighting in offices, homes, landmarks and cities, EVERLIGHT's technology lights up the very spaces and places we enjoy, and saves energy as much as it could. In other words: EVERLIGHT makes the world brighter, more colorful and enhances quality of life.

For more information, please visit our website :
www.everlightlighting.com



Headquarter, New Taipei City, Taiwan



Tucheng Plant,
New Taipei City,
Taiwan



Yuanli Plant,
Miaoli, Taiwan



Tongluo Plant,
Miaoli, Taiwan



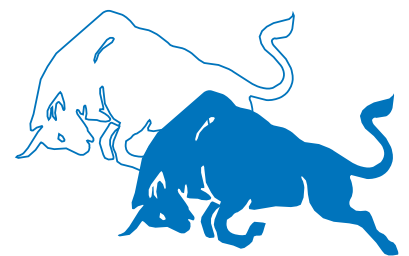
Suzhou Plant,
China



Zhongshan Plant,
China

BUSINESS SPIRIT

The professional R&D, sales and marketing team of EVERLIGHT is always on a quest for innovations and technical breakthrough. We are trying our best to provide the impeccable product solutions for clients.



- STRIVE
- ONWARD
- NEVER LET UP

COMPANY HISTORY

EVERLIGHT is proud of prompt service, high standard quality, and expert technical support to our customers. EVERLIGHT also provides customized products to meet customers' demands.

EVERLIGHT was founded and set LED Lamps and Displays production lines in 1983.

1983

Yuan-Li Factory was established in 1989.

1989

Guangzhou Factory in China was built in 1991.

1991

Company stock was publicly listed and began trading in Taiwan in 1999.

1999

Selected as Green Partner by SONY in 2003.

2003

Yuan-Li Yutian Factory was established in 2008.

2008

New Suzhou Plant III in China was established in 2010.

2010

In September 2011, Everlight filed an invalidation trial against Nichia's white LED patent in Japan (JP 4530094). The Japanese Patent Office has declared such patent invalid in May 2014.

2011

In April 2012, Everlight filed for declaratory judgment action of invalidity and non-infringement against Nichia's U.S. Patent Nos. 5,998,925 and 7,531,960. The jury before the Federal District Court for the Eastern District of Michigan also decided on April 22, 2015 that all asserted claims of these Nichia's patents are invalid.

2012

Became top 5 of worldwide LED company.

2015

1984

Infrared Products on the markets in 1984.

1990

Selected as OEM partner by SHARP in 1990.

1994

Selected as OEM partner by QT Opto in USA in 1994.

2001

Suzhou Factory in China was built in 2001.

2007

EVERLIGHT started to invest and build the Shulin Factory in 2007.

2010

Shulin Headquarters in Taiwan was established 2011.

2011

Shulin Headquarters in Taiwan was established 2011.

2012

In March 2012, Everlight filed an invalidation action against Nichia's YAG white LED patent in Germany (DE 69702929)(EP0936682). The German Federal Patent Court in September 2014 ruled that all claims in such patent are invalid.

2013

EVERLIGHT's laboratory received the highest standard recognition by Environmental Protection Agency (EPA) Recognition and allowed to make LM-80 report by us.



CONTENTS

Outdoor lighting

1 Overview of streetlight series

Victory



Victory_M



P02

Victory 2



P03

2 Overview of floodlight series

Aton



Chloe



P08

Chloe 2



Titan



P09

Highbay



P12

CONTENTS

Interior lighting

Downlight



Spotlight



P16

Ceiling light



Dual color ceiling light



P18

Direct back-lit Panel light



Edge back-lit Panel light



P19

Batten light



P17



CONTENTS

Retrofits

BLE/Sensor 72Q



P22-23

MR16



AR111



60/65/72Q



T8 9W/18W



T8 7W/14W/25W



P24-25

PAR38



P26



EVERLIGHT

Outdoor lighting



Everlight lighting supplies various outdoor luminaires at different power consumption ranges and light patterns to fulfill different situations. Everlight outdoor luminaires have excellent mechanical design and high reliability to ensure a long and stable lifetime. Latest Everlight high efficiency LED streetlight series have a extremely high efficiency at 140 lm/W and appropriate light distribution to increase nighttime area brightness and safety of drivers and pedestrians.





Well-designed, fixed street and roadway lighting is a valuable infrastructure investment because it can provide social and economic benefits to the community. It is the result of careful consideration of many goals, from helping the visual tasks of drivers and pedestrians, to energy conservation and responsible environmental integration, to risk management and minimization of potential obstacles in the path of drivers.

Outdoor lighting

1 Overview of streetlight series



Victory Seires

- Suitable for variable road conditions.
- All models >140lm/W, CE certificated, IP65 / IK08 / 10kV SPD

	Victory				Victory2		
Aluminium alloy cover							
PC cover							
Pole H.	4 m	4-6 m	6-8m	8-10m	12m	15m	>15m
Power	28W	50W	70W	101W	150W	180W	250W
Lm	4,200	7,500	10,500	15,150	21,000	25,200	35,000
Replace	150W Hg lamp	250W Hg lamp	150W HPS	400W Hg lamp	250W HPS	1000W Hg lamp	400W HPS
Saving	81%	80%	53%	75%	42%	82%	40%



Victory



Features

- Over 140 lm/W, highest efficiency
- Less than 3 Kg, ease for installation
- Universal input: 100-277 Vac
- IP 65, strong capability

Model	Power consumption (W)	Input voltage	Lumen (lm)	CCT (K)	CRI (Ra)	Size (mm)	Weight (Kg)	Pole height (m)
SL-Victory/100277AC/EOS28ABA(CNS)O	28	100-277 VAC	3640	5000	>70	407 x 207 x 124	3	4
SL-Victory/100277AC/EOS50ECA(CNS)O	50	100-277 VAC	7000	5000	>70	407 x 207 x 124	3	6
SL-Victory/100277AC/EOS70ECA(CNS)O	70	100-277 VAC	9800	5000	>70	407 x 207 x 124	3	8
SL-Victory/100277AC/EOS101ECA(CNS)O	101	100-277 VAC	14140	5000	>70	407 x 207 x 124	3	10
SL-Victory/100277AC/EOS140ECA(CNS)O	140	100-277 VAC	19600	5000	>70	407*207*124	3	12



Victory_M



Features

- Over 140 lm/W, highest efficiency
- Less than 5 Kg, ease for installation
- Universal input: 100-277 Vac
- IP 65, strong capability

Model	Power consumption (W)	Input voltage	Lumen (lm)	CCT (K)	CRI (Ra)	Size (mm)	Weight (Kg)	Pole height (m)
SL-VICTORY/100277AC/EOS28ABA/M(TW)O	28	100-277 VAC	3640	5000	>70	420 x 210 x 135	5	4
SL-VICTORY/100277AC/EOS50ECA/M(TW)O	50	100-277 VAC	7000	5000	>70	420 x 210 x 135	5	6
SL-VICTORY/100277AC/EOS70ECA/M(TW)O	70	100-277 VAC	9800	5000	>70	420 x 210 x 135	5	8
SL-VICTORY/100277AC/EOS101ECA/M(TW)O	101	100-277 VAC	14140	5000	>70	420 x 210 x 135	5	10
SL-VICTORY/100277AC/EOS110ECA/M(TW)O	110	100-277 VAC	15400	5000	>70	420 x 210 x 135	5	10



Victory 2

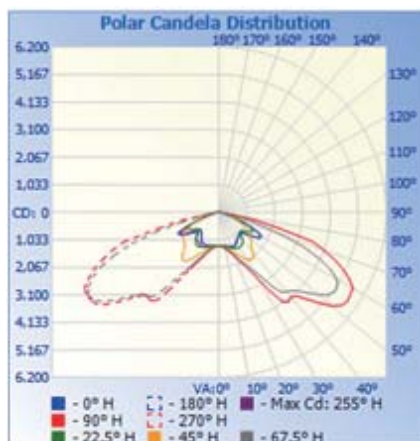


Features

- Over 140 lm/W, highest efficiency
- Less than 7 Kg, ease for installation
- Universal input: 100-277 Vac
- IP 66, strong capability

Model	Power consumption (W)	Input voltage	Lumen (lm)	CCT (K)	CRI (Ra)	Size (mm)	Weight (Kg)	Pole height (m)
SL-VICTORY2/100277AC/EOS150ECS(TW)_O	150	100-277 VAC	21000	3000	>70	720 x 265 x 210	7	12
SL-VICTORY2/100277AC/EOS150ECT(TW)_O	150	100-277 VAC	21000	4000	>70	720 x 265 x 210	7	12
SL-VICTORY2/100277AC/EOS150ECA(TW)_O	150	100-277 VAC	21000	5000	>70	720 x 265 x 210	7	12
SL-VICTORY2/100277AC/EOS180ECS(TW)_O	180	100-277 VAC	25200	3000	>70	720 x 265 x 210	7	15
SL-VICTORY2/100277AC/EOS180ECT(TW)_O	180	100-277 VAC	25200	4000	>70	720 x 265 x 210	7	15
SL-VICTORY2/100277AC/EOS180ECA(TW)_O	180	100-277 VAC	25200	5000	>70	720 x 265 x 210	7	15
SL-VICTORY2/100277AC/EOS250ECS(TW)_O	250	100-277 VAC	35000	3000	>70	720 x 265 x 210	7	>15
SL-VICTORY2/100277AC/EOS250ECT(TW)_O	250	100-277 VAC	35000	4000	>70	720 X 265 X 210	7	>15
SL-VICTORY2/100277AC/EOS250ECA(TW)_O	250	100-277 VAC	35000	5000	>70	720 X 265 X210	7	>15

Light distribution



Accessories for Streetlight



Light shield

To avoid unnecessary house-side light by streetlight, this item can be used to reduce house-side light and increase quality of road lighting.



Surge protector

EN 61643-11 (type 2)
IEC 61000-4-5 standard
Maximum discharge current
40 kA (8/20 μ s)/pole
Surge Suppression Level: 10kV
Ingress Protection level: IP 65



NEMA socket

NMEA socket is a receptacle for multi-functional use. It is a standard receptacle for photocell, controller, and IoT devices.



Adjustal

This item helps LED streetlight to be tilted and then to fulfill target illuminance and uniformity set by the project owner or government.

Ideal platform for smart city components

Smart LED Streetlight

Energy and Asset
Managment

More Smart Apps
and Cloud

Smart Traffic

Smart Parking



LED lighting can be one important part of smart city because:

> Presence Everywhere > Connectivity > Sensors > Cloud and Dataabse



Amman, Jordan

Over 1,000 Pcs of Everlight LED streetlight are installed in the center of Amman city. It makes a new symbol of city innovation.

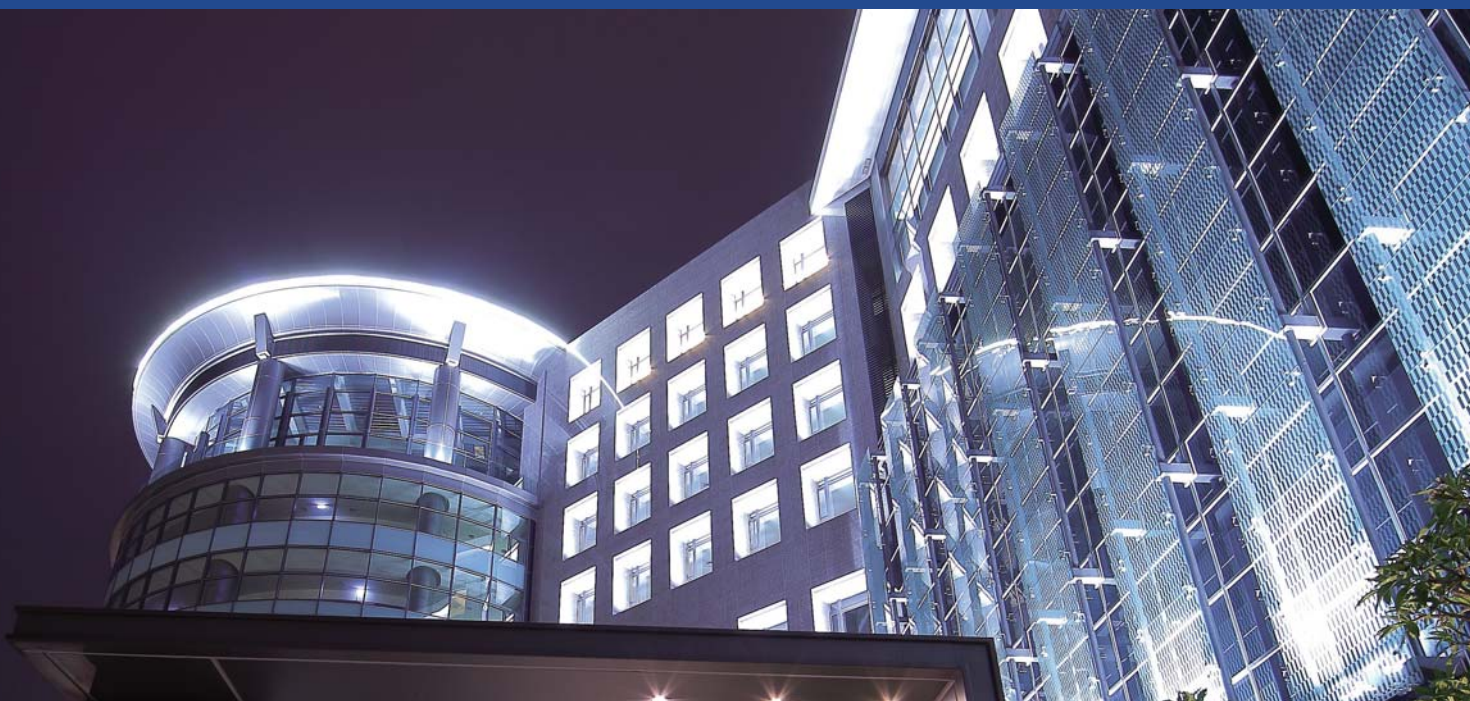


Taiwan

More than 200,000 Pcs LED streetlight saves several tens of millions of USD energy cost for local government and reduces large amount of maintenance budget.



With each of the various task conditions, industrial lighting must provide adequate visibility so that materials can be transformed into finished products. Physical hazards exist in manufacturing processes, so lighting is of the utmost importance as a safety factor in preventing accidents. The speed of operations may be such as to allow only minimum time for visual perception, and therefore lighting must be a compensating factor to increase the speed of seeing.



Architectural lighting may include floodlighting, outlining, spotlighting, or any applicable combination of these techniques. Projecting images on a structure is yet another dramatic effect. Whenever emphasis is placed on nighttime activities such as recreation, shopping, and traveling, lighting offers an opportunity to create architectural impressions.

Outdoor lighting

2 Overview of floodlight series



	Titan	Titan	Titan	Chloe 2	Chloe	Aton
Lumen output (lm)	120,000	60,000	36000	35,000/ 28,000/	19,600/ 15,400/ 12,600/	77,00/ 6,000/ 4,000/
Wattage (W)	1000	500	300	250 / 200	140 / 110 / 90	70 / 55 / 35
Dimension (mm)	560 x 590 x 180	560 x 590 x 180	560 x 590 x 180	482 x 365 x 204	560 x 590 x 180	373.4 x 212 x 96.9
Weight (Kg)	20	20	20	6	4	2
Beam Angle	35	35	35 / 110	35 / 110	35 / 110	110
Replace	CDM 2000W	CDM 1000W	CDM 400W	CDM 400W	Mercury Lamp 400W	Mercury Lamp 250W



Aton



Features

- >100 lm/W, high efficiency
- Less than 3 Kg, ease to install
- IP65, suitable for outdoor usage

Model	Power consumption (W)	Input voltage	Lumen (lm)	CCT (K)	CRI (Ra)	Size (mm)
SL-Aton/A/35W/730/100277VAC/CR	35	100-277VAC	3500	3000	>70	373 x 211 x 70
SL-Aton/A/35W/750/100277VAC/CR	35	100-277 VAC	4000	5000	>70	373 x 211 x 70
SL-Aton/A/55W/730/100277VAC/CR	55	100-277 VAC	5500	3000	>70	373 x 211 x 70
SL-Aton/A/55W/750/100277VAC/CR	55	100-277 VAC	6000	5000	>70	373 x 211 x 70
SL-Aton/A/70W/730/100277VAC/CR	70	100-277 VAC	7000	3000	>70	373 x 211 x 70
SL-Aton/A/70W/750/100277VAC/CR	70	100-277 VAC	7700	5000	>70	373 x 211 x 70

Applications • Architecture • Outdoor • Billboard



Chloe



Features

- Ultra high efficiency, >120 lm/W
- Less than 4Kg, Ease to install
- IP65, Strong to severe environment

Model	Power consumption (W)	Input voltage	Lumen (lm)	CCT (K)	Beam Ang	CRI (Ra)	Size (mm)	Weight (Kg)
SL-CHLOE/100240AC/90CrEAA/TW/M	90	100-240 VAC	12600	5000	Wide	>70	344 x 240 x 192	4
SL-CHLOE/100240AC/90CrE9S/TW/M	90	100-240 VAC	11700	3000	Wide	>70	344 x 240 x 192	4
SL-Chloe/100240AC/110CrEAA/TW/M	110	100-240 VAC	15400	5000	Wide	>70	344 x 240 x 192	4
SL-Chloe/100240AC/110CrE9S/TW/M	110	100-240 VAC	12800	3000	Wide	>70	344 x 240 x 192	4
SL-Chloe/100240AC/140CrE9A/TW/M	140	100-240 VAC	19600	5000	Wide	>70	344 x 240 x 192	4
SL-Chloe/100240AC/140CrE8S/TW/M	140	100-240 VAC	16800	3000	Wide	>70	344 x 240 x 192	4
SL-Chloe/100240AC/Fs120B8A/TW/M	120	100-240 VAC	14400	5000	Narrow	>70	344 x 240 x 192	4
SL-Chloe/100240AC/Fs120B8S/TW/M	120	100-240 VAC	13200	3000	Narrow	>70	344 x 240 x 192	4
SL-Chloe/100240AC/Fs150B8A/TW/M	150	100-240 VAC	18000	5000	Narrow	>70	344 x 240 x 192	4
SL-Chloe/100240AC/Fs150B8S/TW/M	150	100-240 VAC	16500	3000	Narrow	>70	344 x 240 x 192	4

Applications • Architecture • Outdoor • Large billboard • Highbay • Parking lot • Petro station



Chloe 2



Features

- Ultra high efficiency, >130 lm/W
- high lumen output, >24000 lm
- IP65, Strong to severe environment

Model	Power consumption (W)	Input voltage	Lumen (lm)	CCT (K)	CRI (Ra)	Beam	Size (mm)	Weight (Kg)
SL-Chloe2/100240AC/200CrEAA/TW	200	100-240 VAC	28000	5000	>70	Wide	482 x 365 x 204	6
SL-Chloe2/100240AC/200CrEAS/TW	200	100-240 VAC	25200	3000	>70	Wide	482 x 365 x 204	6
SL-Chloe2/100240AC/200FsB9A/TW	200	100-240 VAC	24000	5000	>70	Narrow	482 x 365 x 204	6
SL-Chloe2/100240AC/200FsB9S/TW	200	100-240 VAC	21600	3000	>70	Narrow	482 x 365 x 204	6
SL-Chloe2/100250AC/250CrEAA/TW	250	100-240 VAC	35000	5000	>70	Wide	482 x 365 x 204	6
SL-Chloe2/100250AC/250CrEAS/TW	250	100-240 VAC	32500	3000	>70	Wide	482 x 365 x 204	6
SL-Chloe2/100250AC/250FsB9A/TW	250	100-240 VAC	30000	5000	>70	Narrow	482 x 365 x 204	6
SL-Chloe2/100250AC/250FsB9S/TW	250	100-240 VAC	27000	3000	>70	Narrow	482 x 365 x 204	6

Applications • Architecture • Outdoor • Large area



Titan



Features

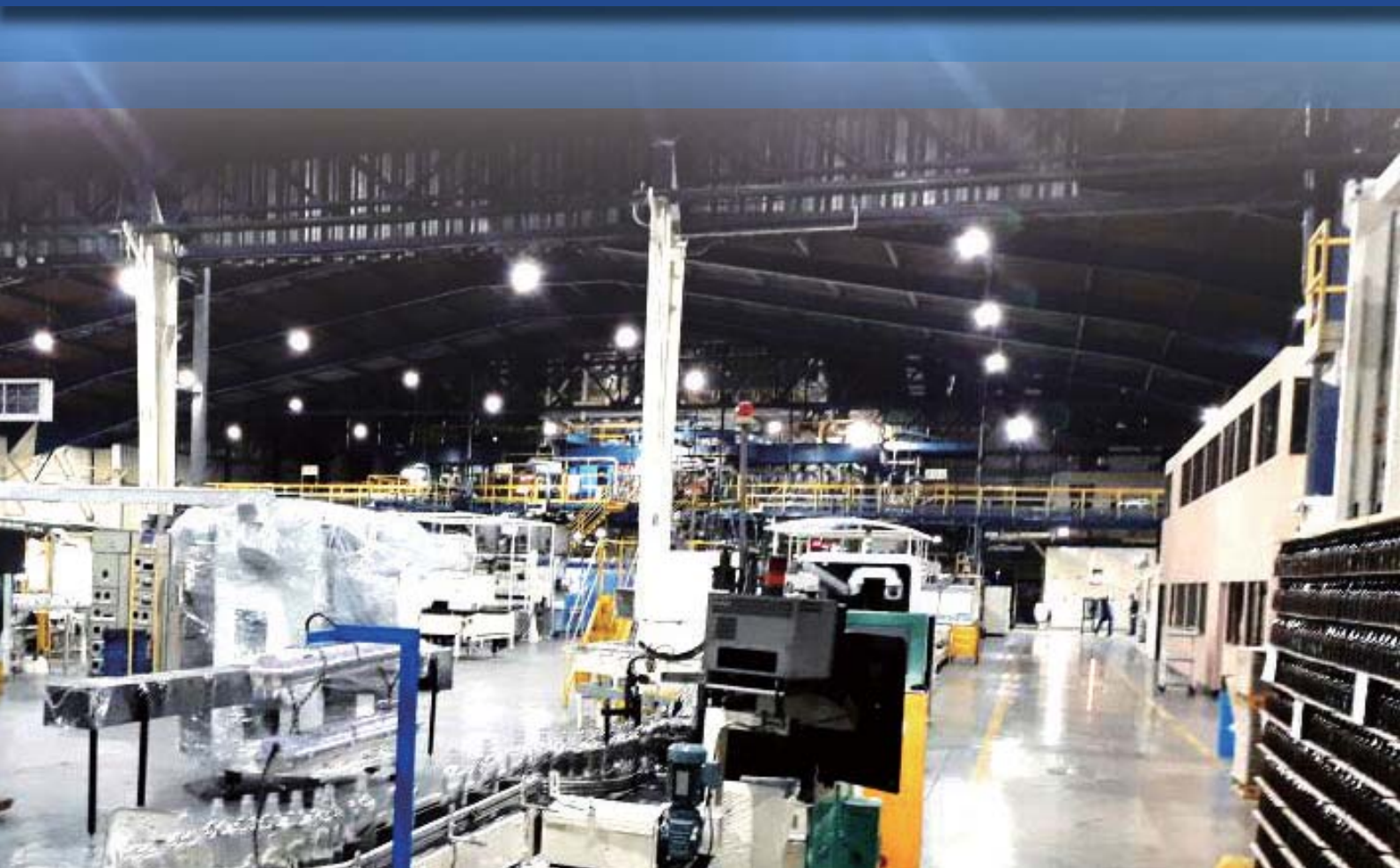
- Ultra high efficiency, >120 lm/W
- Highest lumen output >120000 lm
- IP65, Strong to severe environment

Model	Power consumption (W)	Input voltage	Lumen (lm)	CCT (K)	CRI (Ra)	Beam	Size (mm)	Weight (kg)
SL-Titan/100277AC/Cr300B8A/TW	300	100-240 VAC	36000	5000	>70	Wide	615 x 650 x 180	25
SL-Titan/100277AC/Fs300B8A/TW	300	100-240 VAC	36000	5000	>70	Narrow	615 x 650 x 180	25
SL-Titan/100277AC/Cr500B8A/TW	500	100-240 VAC	60000	5000	>70	Wide	615 x 650 x 180	25
SL-Titan/100277AC/Fs500B8A/TW	500	100-240 VAC	60000	5000	>70	Narrow	615 x 650 x 180	25
SL-Titan/100277AC/Cr1000B8A/TW	1000	100-240 VAC	120000	5000	>70	Wide	615 x 650 x 180	25
SL-Titan/100277AC/Fs1000B8A/TW	1000	100-240 VAC	120000	5000	>70	Narrow	615 x 650 x 180	25

Applications • Architecture • Outdoor • Arena • Stadium



Costa Rica, Factory of Glass,
1Pcs 110W LED replaces 1Pcs 400W Mercury Lamp
300Pcs in this case >65% Energy saving
Annual saving energy cost > 148,000 USD
We also made better visibility and safety in preventing accidents in the factory





Saudi Arabia, Chain Petrol Station,
1Pcs 140W LED replaces 1 pcs 400W Mercury Lamp
Average 30Pcs in one station
>65% Energy saving
A brighter outdoor area attracts more commercial opportunities





Highbay

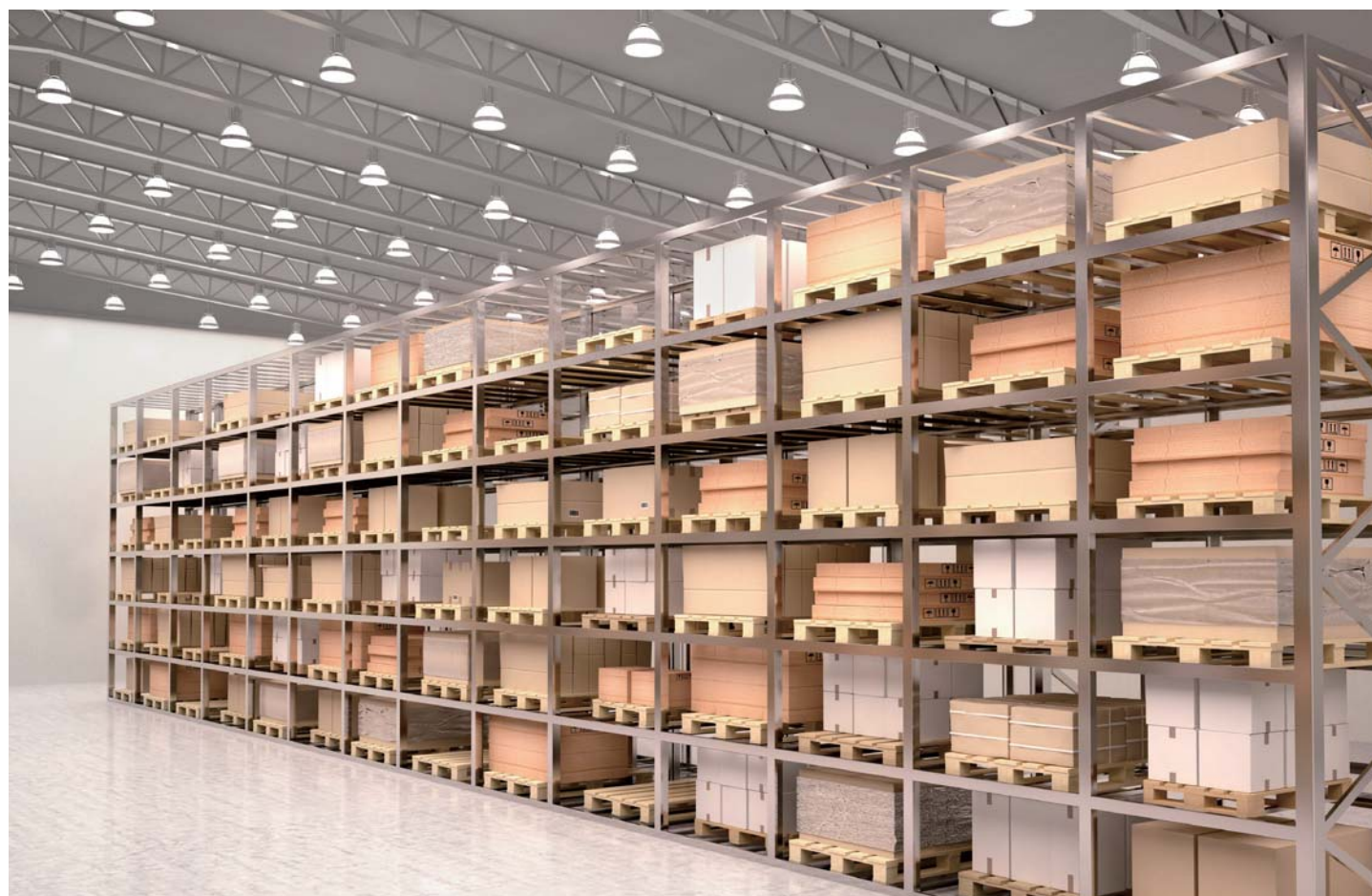


Features

- 3.8 KG light weight design
- High Lumen Output
- Uniform Light Distribution
- Glare Reduced Design
- Deffusor as an optional accessory
- Lifetime > 25,000 Hours


Model	Power consumption (W)	Input voltage	Lumen (lm)	CCT (K)	CRI (Ra)	Size (mm)
FDH/KM/60W/857/UNI/Lens	60	100-240 VAC	6600	5700	>80	Ø 390 x 320
FDH/KM/100W/857/UNI/Lens	100	100-240 VAC	11000	5700	>80	Ø 390 x 320
FDH/KM/130W/857/UNI/Lens	130	100-240 VAC	14300	5700	>80	Ø 390 x 320
FDH/KM/150W/857/UNI/Lens-OSD	150	100-240 VAC	16500	5700	>80	Ø 390 x 320

Applications • Architecture • Factory • Warehouse • Shop





Everlight LED highbay helps customers to build an energy-saving and well-designed lighting environment with high quality luminaires. It is very easy to install and to replace traditional lighting equipments.



Lighting may be diffuse or directional. Diffuse light minimizes shadows and provides a more relaxing and less visually compelling atmosphere. When diffuse light is used alone, no object in the visual scene is given prominence. Artful use of directional light can provide highlights and shadows that emphasize texture and form. Brilliance or sparkle can be achieved with small unshielded sources, such as a bare lamp or a candle flame. The glitter of crystal and polished brass, the luster of table settings, and the sheen of surface materials can be heightened by directional lighting to create a sense of warmth and festivity.

EVERLIGHT

Interior lighting



Everlight interior lighting series can help you to make comfortable and energy-saving indoor environment. With spotlight, downlight, batten light, ceiling light, and panel light, we can decorate every dimension of interior space at fine and adequate lighting atmosphere.





Downlight



Features

- Elegant design, easy to fit into architectures
- Consistant and fine color, makes brighter area
- Universal input:100-240 Vac

Model	Power consumption (W)	Input voltage	Lumen (lm)	CCT (K)	CRI (Ra)	Size (mm)	Cutting Hole (mm)
FCR/J/12W/830/U/150-IN	12	100-240VAC	900	3000	>80	Ø 180 x 48	150
FCR/J/12W/865/U/150-IN	12	100-240VAC	1000	6500	>80	Ø 180 x 48	150
FCR/J/15W/830/U/150-IN	15	100-240VAC	1200	3000	>80	Ø 180 x 48	150
FCR/J/15W/865/U/150-IN	15	100-240VAC	1300	6500	>80	Ø 180 x 48	150
FCR/J/20W/830/U/150-IN	20	100-240VAC	1500	3000	>80	Ø 180 x 48	150
FCR/J/20W/865/U/150-IN	20	100-240VAC	1600	6500	>80	Ø 180 x 48	150
FCR/J/20W/830/U/200-IN	20	100-240VAC	1600	3000	>80	Ø 230 x 48	200
FCR/J/20W/865/U/200-IN	20	100-240VAC	1700	6500	>80	Ø 230 x 48	200
FCR/J/25W/830/U/200-IN	25	100-240VAC	1900	3000	>80	Ø 230 x 48	200
FCR/J/25W/865/U/200-IN	25	100-240VAC	2000	6500	>80	Ø 230 x 48	200



Spotlight



Features

- Replacement for whole set of halogen fixtures
- Adjustable beam directions
- Ease for installations and maintenance

Model	Power consumption (W)	Input voltage	Lumen (lm)	CCT (K)	CRI (Ra)	Size (mm)	Cutting Hole (mm)
FCR/K/4.5W/830/U/75/24D-IN	4.5	100-240VAC	400	3000	>80	Ø 90 x 40	75
FCR/K/4.5W/865/U/75/24D-IN	4.5	100-240VAC	400	6500	>80	Ø 90 x 40	75
FCR/K/6W/830/U/75/24D-IN	6	100-240VAC	550	3000	>80	Ø 90 x 40	75
FCR/K/6W/865/U/75/24D-IN	6	100-240VAC	550	6500	>80	Ø 90 x 40	75
FCR/K/4.5W/830/U/75/36D-IN	4.5	100-240VAC	400	3000	>80	Ø 90 x 40	75
FCR/K/4.5W/865/U/75/36D-IN	4.5	100-240VAC	400	6500	>80	Ø 90 x 40	75
FCR/K/6W/830/U/75/36D-IN	6	100-240VAC	550	3000	>80	Ø 90 x 40	75
FCR/K/6W/865/U/75/36D-IN	6	100-240VAC	550	6500	>80	Ø 90 x 40	75



Batten light



Features

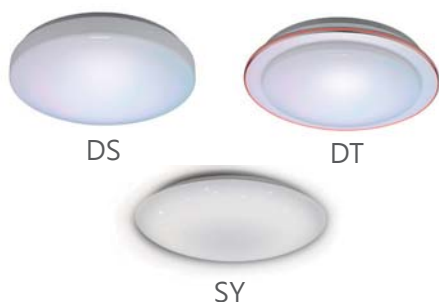
- Ease for installations
- Homogeneous light color
- 10 Pcs connection in one circuit
- Universal input: 100-240 Vac

Model	Power consumption (W)	Input voltage	Lumen (lm)	CCT (K)	CRI (Ra)
FBT/T5/A/5W/830/U/1ft DT	5	100-240VAC	450	3000	>80
FBT/T5/A/5W/865/U/1ft DT	5	100-240VAC	500	6500	>80
FBT/T5/A/9W/830/U/2ft DT	9	100-240VAC	800	3000	>80
FBT/T5/A/9W/865/U/2ft DT	9	100-240VAC	850	6500	>80
FBT/T5/A/15W/830/U/3ft DT	15	100-240VAC	1400	3000	>80
FBT/T5/A/15W/865/U/3ft DT	15	100-240VAC	1500	6500	>80
FBT/T5/A/18W/830/U/4ft DT	18	100-240VAC	1600	3000	>80
FBT/T5/A/18W/865/U/4ft DT	18	100-240VAC	1700	6500	>80





Interior lighting



Ceiling light



Features

- Stylish design, ease for installation
- Makes brighter area
- Universal input:100-240 Vac

Model	Power consumption (W)	Input voltage	Lumen (lm)	CCT (K)	CRI (Ra)	Size (mm)
FCC/CHA/18W/830/U/110D/DS	18	100-240VAC	1350	3000	>80	Ø 360 x 76
FCC/CHA/18W/865/U/110D/DS	18	100-240VAC	1440	6500	>80	Ø 360 x 76
FCC/CHA/18W/830/U/110D/DT	18	100-240VAC	1350	3000	>80	Ø 400 x 80
FCC/CHA/18W/865/U/110D/DT	18	100-240VAC	1440	6500	>80	Ø 400 x 80
FCC/CHA/18W/830/U/110D/SY	18	100-240VAC	1530	3000	>80	Ø 390 x 58
FCC/CHA/18W/865/U/110D/SY	18	100-240VAC	1620	6500	>80	Ø 390 x 58



Dual color ceiling light



Features

- Five default modes, able to change atmosphere in one second
- 10 levels for dimming
- High CRI, wonderful color

Model	Power consumption (W)	Input voltage	Lumen (lm)	CCT (K)	CRI (Ra)	Size (mm)
FCC/DL/A/54W/828-860/U/110D/SY (DT)	54	100-240VAC	4500	2800 - 6000	>85	Ø600 x 130
FCC/DL/ECO/A/54W/828-860/U/110D/SD(DT)	54	100-240VAC	4700	2800 - 6000	>85	Ø600 x 130



Direct back-lit Panel light



Features

- Direct back-lit Panel light
- Ease to install with light weight
- Universal input:100-240 Vac

Model	Power consumption (W)	Input voltage	Lumen (lm)	CCT (K)	CRI (Ra)	Size (mm)
FOP/J/40W/830/U/2x2	40	100-240VAC	3200	3000	>80	600 x 600 x 50
FOP/J/40W/840/U/2x2	40	100-240VAC	3320	4000	>80	600 x 600 x 50
FOP/J/40W/857/U/2x2	40	100-240VAC	3500	5700	>80	600 x 600 x 50



Edge back-lit Panel light



Features

- Edge back-lit Panel light
- Homogeneous light effects
- Universal input:100-240 Vac

Model	Power consumption (W)	Input voltage	Lumen (lm)	CCT (K)	CRI (Ra)	Size (mm)
FOP/G/40W/830/U/2X2 T	40	100-240VAC	3200	3000	>80	600 x 600 x 9
FOP/G/40W/840/U/2X2 T	40	100-240VAC	3360	4000	>80	600 x 600 x 9
FOP/G/40W/857/U/2X2 T	40	100-240VAC	3500	5700	>80	600 x 600 x 9



EVERLIGHT

Retrofits



Everlight LED retrofit series is an ideal retrofit solution to replace traditional light sources with extraordinary energy-saving for environment and perfect color with high brightness.



BLE 72Q

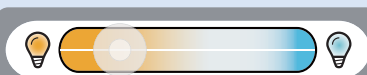


Features

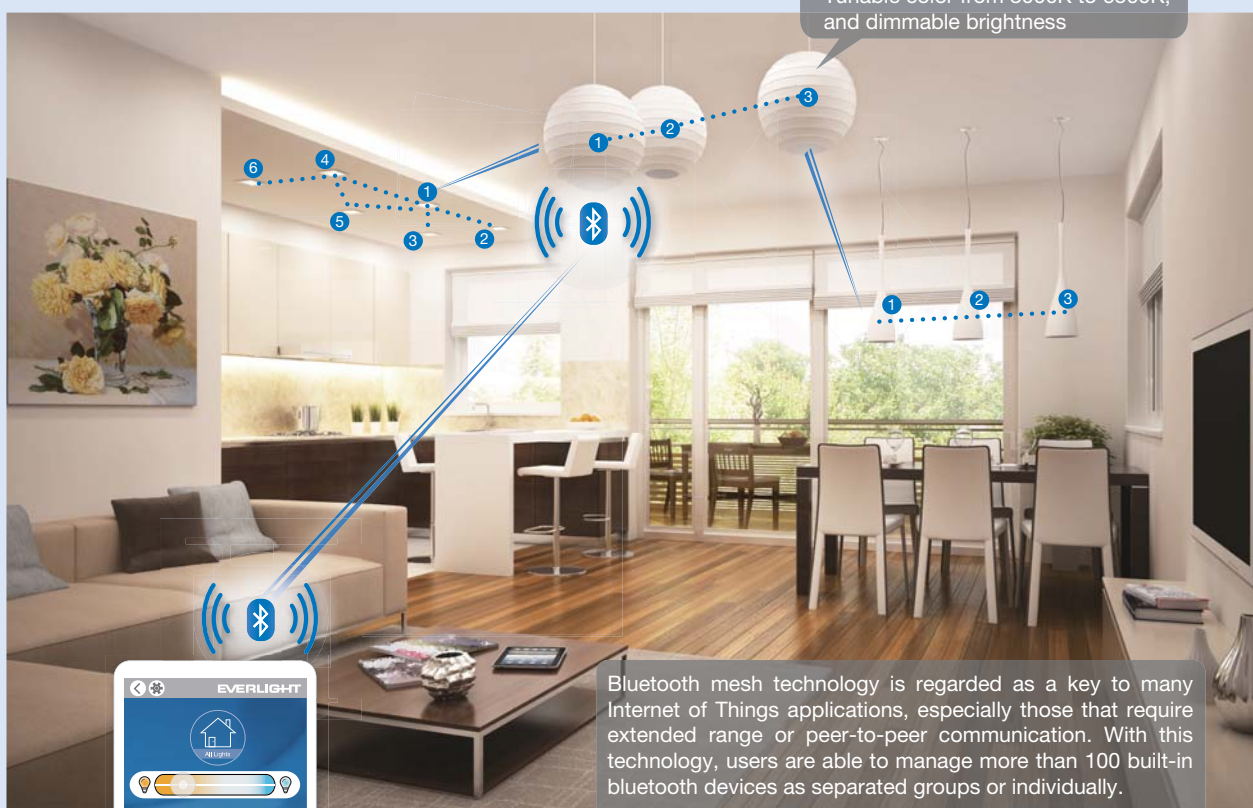
- Easy to install and play. Without other equipment or bridges
- Built-in BLE Mesh connectivity so can manage up to 100 bulbs at once and bulbs be controlled as a group or individually
- Replace 40W incandescent
- Tunable color from 3000K to 6500K
- Support Android version 4.3 or above or IOS 7.0 or above
- Unique Industrial Design

Model	Power Consumption (W)	Dimension (mm)	Efficiency (lm/w)	CCT (K)	Lumen (lm)	CRI (Ra)	Beam Angle	Input voltage	Operating Temperature (°C)
LBA/72Q/10W/DUAL/UNI/E27/BLE	10W	Ø 72 x 145	80	3000~6500	800	≥80	270(°C)	100~240VAC	-20 ~ 40

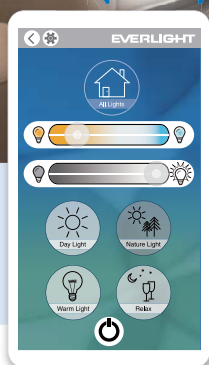
Can be Easily installed without other equipment, bridge, or wiring.



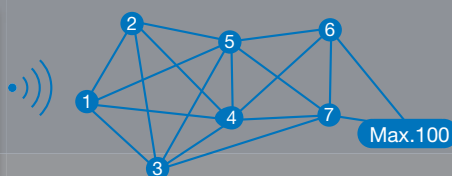
Tunable color from 3000K to 6500K, and dimmable brightness



Bluetooth mesh technology is regarded as a key to many Internet of Things applications, especially those that require extended range or peer-to-peer communication. With this technology, users are able to manage more than 100 built-in bluetooth devices as separated groups or individually.



Control from iOS, Android, and other mobile devices
[iOS 7.0 or above / Android 4.3 or above]





Sensor 72Q

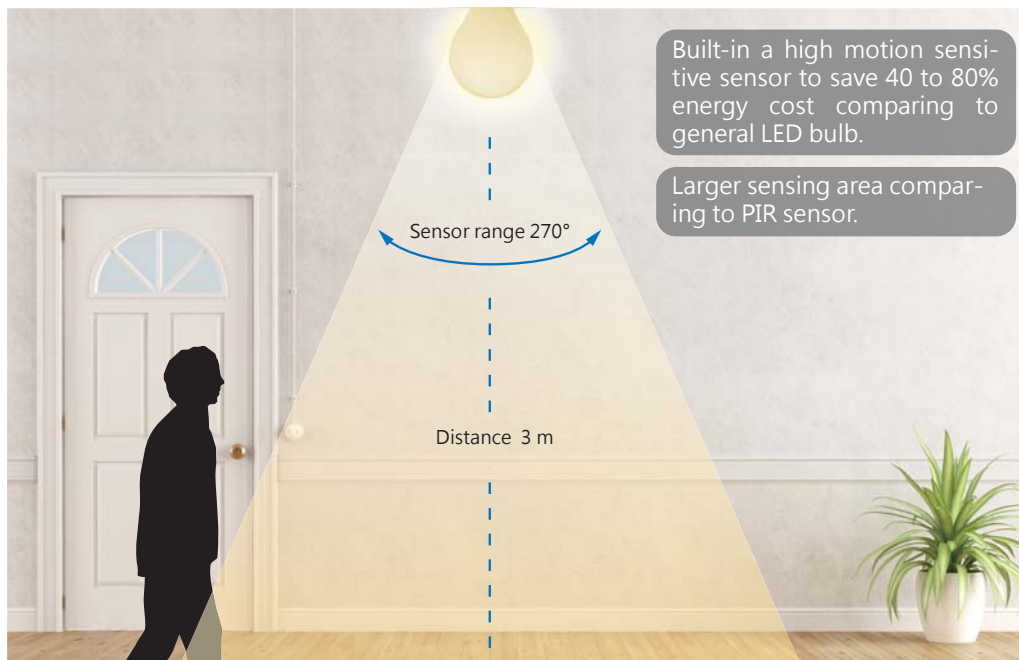


Features

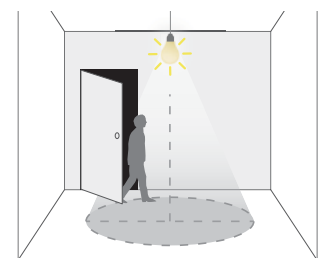
- Built-in a high sensitive motion sensor to save more than 90% energy
- Automatically light up when movement is sensed and 1 minute or 3 minutes auto off time
- Replace 60W incandescent
- ANSI Standard Omni-directional
- Unique Industrial Design
- Rated Voltage : 100-240 Vac, 50/60 Hz

Model	Power Consumption (W)	Dimension (mm)	Efficiency (lm/w)	CCT (K)	Lumen (lm)	CRI (Ra)	Beam Angle	Input voltage	Operating Temperature (°C)
LBA/72Q/10W/830/UNI/E27/CMS	10W	Ø 72 x 145	90	3000	900	≥80	270(°C)	100~240VAC	-20 ~ 40
LBA/72Q/10W/865/UNI/E27/CMS	10W	Ø 72 x 145	90	6500	900	≥80	270(°C)	100~240VAC	-20 ~ 40

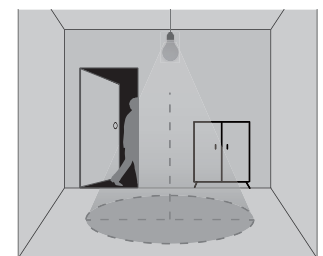
EVERLIGHT sensor bulbs - technology and applications



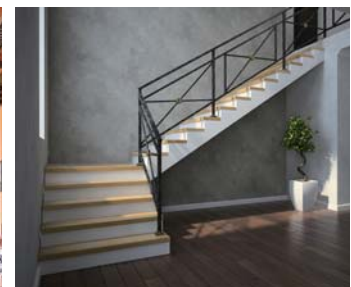
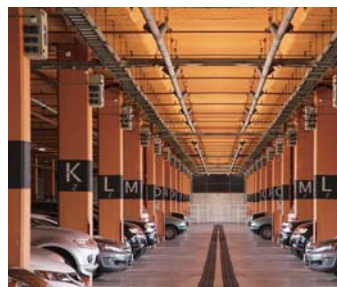
Auto turn-on
(Space occupied)



Auto turn-off
(Space vacant 1 or 3 minutes)



Able to be applied in elevators, stairways, parking lots hallways, storage rooms, garage, toilet, sidewalk.





60/65/72Q



Features

- Ideal replacement for traditional light sources
- Consistant and fine color
- Universal input:100-240 Vac

Model	Power consumption (W)	Input voltage	Lumen (lm)	CCT (K)	CRI (Ra)	Lamp holder	Replacement	Size (mm)
LBA/60Q/9.5W/830/UNI/E27	9.5	100-240 VAC	855	3000	>80	E27	60W incandescent	Ø 60 x 109
LBA/60Q/9.5W/865/UNI/E27	9.5	100-240 VAC	900	6500	>80	E27	60W incandescent	Ø 60 x 109
LBA/65Q/11.5W/830/UNI/E27	11.5	100-240 VAC	1055	3000	>80	E27	75W incandescent	Ø 65 x 119
LBA/65Q/11.5W/865/UNI/E27	11.5	100-240 VAC	1155	6500	>80	E27	75W incandescent	Ø 65 x 119
LBA/72Q/15W/830/UNI/E27	15	100-240 VAC	1450	3000	>80	E27	100W incandescent	Ø 72 x 145
LBA/72Q/15W/865/UNI/E27	15	100-240 VAC	1550	6500	>80	E27	100W incandescent	Ø 72 x 145
LBA/ECO60Q/6.5W/830/UNI/E27	6.5	100-240 VAC	800	3000	>80	E27	60W incandescent	Ø60 x 109
LBA/ECO60Q/6.5W/865/UNI/E27	6.5	100-240 VAC	850	6500	>80	E27	60W incandescent	Ø60 x 109
LBA/ECO60Q/7.5W/830/UNI/E27	7.5	100-240 VAC	900	3000	>80	E27	65W incandescent	Ø60 x 109
LBA/ECO60Q/7.5W/865/UNI/E27	7.5	100-240 VAC	950	6500	>80	E27	65W incandescent	Ø60 x 109
LBA/ECO65Q/9.5W/830/UNI/E27	9.5	100-240 VAC	1150	3000	>80	E27	75W incandescent	Ø 65 x 119
LBA/ECO65Q/9.5W/830/UNI/E27	9.5	100-240 VAC	1200	6500	>80	E27	75W incandescent	Ø 65 x 119
LBA/ECO72Q/12.5W/830/UNI/E27	12.5	100-240 VAC	1450	3000	>80	E27	100W incandescent	Ø 72 x 145
LBA/ECO72Q/12.5W/830/UNI/E27	12.5	100-240 VAC	1550	6500	>80	E27	100W incandescent	Ø 72 x 145





T8 9W/18W



Features

- 100 lm/W, high efficiency as replacement to traditional T8
- Consistant and fine color
- Universal input: 100-240 Vac, driver built-in

Model	Power consumption (W)	Input voltage	Lumen (lm)	CCT (K)	CRI (Ra)	Lamp holder	Replacement	Size (mm)
T8/9W/603 (830CNS-GD2)	9	100-240 VAC	850	3000	>80	G13	T8 Fluorescent	603
T8/9W/603 (865CNS-GD2)	9	100-240 VAC	900	6500	>80	G13	T8 Fluorescent	603
T8/18W/4ft (830CNS-GD2)	18	100-240 VAC	1700	3000	>80	G13	T8 Fluorescent	1212
T8/18W/4ft (865CNS-GD2)	18	100-240 VAC	1800	6500	>80	G13	T8 Fluorescent	1212



T8 7W/14W



Features

- 130 lm/W, ultra-high efficiency as replacement to traditional T8
- Consistant and fine color
- Universal input: 100-240 Vac, driver built-in

Model	Power consumption (W)	Input voltage	Lumen (lm)	CCT (K)	CRI (Ra)	Lamp holder	Replacement	Size (mm)
T8/7W/603 (830CNS-GS-PE)	7	100-240 VAC	800	3000	>80	G13	T8 Fluorescent	603
T8/7W/603 (865CNS-GS-PE)	7	100-240 VAC	900	6500	>80	G13	T8 Fluorescent	603
T8/14W/4ft (830CNS-GS-PE)	14	100-240 VAC	1700	3000	>80	G13	T8 Fluorescent	1212
T8/14W/4ft (865CNS-GS-PE)	14	100-240 VAC	1800	6500	>80	G13	T8 Fluorescent	1212



T8 25W



Features

- 150 lm/W, ultra-high efficiency as replacement to traditional T8
- Consistant and fine color
- Universal input: 100-240 Vac, driver built-in

Model	Power consumption (W)	Input voltage	Lumen (lm)	CCT (K)	CRI (Ra)	Lamp holder	Replacement	Size (mm)
T8/25W/5ft/C3 (830CNS-GS-PE)	25	100-240 VAC	3000	3000	>80	G13	T8 Fluorescent	1512
T8/25W/5ft/C3 (840CNS-GS-PE)	25	100-240 VAC	3000	4000	>80	G13	T8 Fluorescent	1512
T8/25W/5ft/C3 (857CNS-GS-PE)	25	100-240 VAC	3200	5700	>80	G13	T8 Fluorescent	1512
T8/25W/5ft/C3 (865CNS-GS-PE)	25	100-240 VAC	3200	6500	>80	G13	T8 Fluorescent	1512
T8/25W/5ft/C5 (830CNS-GS-PE)	25	100-240 VAC	3500	3000	>80	G13	T8 Fluorescent	1512
T8/25W/5ft/C5 (840CNS-GS-PE)	25	100-240 VAC	3500	4000	>80	G13	T8 Fluorescent	1512
T8/25W/5ft/C5 (857CNS-GS-PE)	25	100-240 VAC	3700	5700	>80	G13	T8 Fluorescent	1512
T8/25W/5ft/C5 (865CNS-GS-PE)	25	100-240 VAC	3700	6500	>80	G13	T8 Fluorescent	1512



MR16



Features

- Ideal replacement for 50W Halogen
- Single light source COB, straight light and clear shape
- Central beam high intensity for commercial usages

Model	Power consumption (W)	Input voltage	Lumen (lm)	CCT (K)	CRI (Ra)	Candlelight (cd)	Beam angle (Degree)	Lamp holder	Replacement
SL-16G/012ADC/COB/P07/25/827	7	AC/DC 12V	500	2700	>80	2200	25	GU 5.3	50W Halogen
SL-16G/012ADC/COB/P07/35/827	7	AC/DC 12V	500	2700	>80	1100	35	GU 5.3	50W Halogen



AR111



Features

- Ideal replacement for 75W Halogen AR111
- Unique design, COB as light source
- High CRI, Ra>90

Model	Power consumption (W)	Input voltage	Lumen (lm)	CCT (K)	CRI (Ra)	Beam Angle (Degree)	Replacement
SL-AR111/CB/P12/24/930/ND/UNI/DT	12	100-240VAC	650	3000	>90	24	75W Halogen AR111



15D



38D

PAR38



Features

- High efficiency to replace 100W incandescent PAR38
- Microlens design for homogeneous light beam
- Ideal light source for spotlight light fixtures

Model	Power consumption (W)	Input voltage	Lumen (lm)	CCT (K)	CRI (Ra)	Beam Angle (Degree)	Lamp holder	Replacement
LRP/38A/15W/827/UNI/E27/15D	15	100-240VAC	1050	2700	>80	15	E27	100W Incandescent PAR38
LRP/38A/15W/865/UNI/E27/15D	15	100-240VAC	1100	6500	>80	15	E27	100W Incandescent PAR38
LRP/38A/15W/827/UNI/E27/38D	15	100-240VAC	1050	2700	>80	38	E27	100W Incandescent PAR38
LRP/38A/15W/865/UNI/E27/38D	15	100-240VAC	1100	6500	>80	38	E27	100W Incandescent PAR38

EVERLIGHT

EVERLIGHT